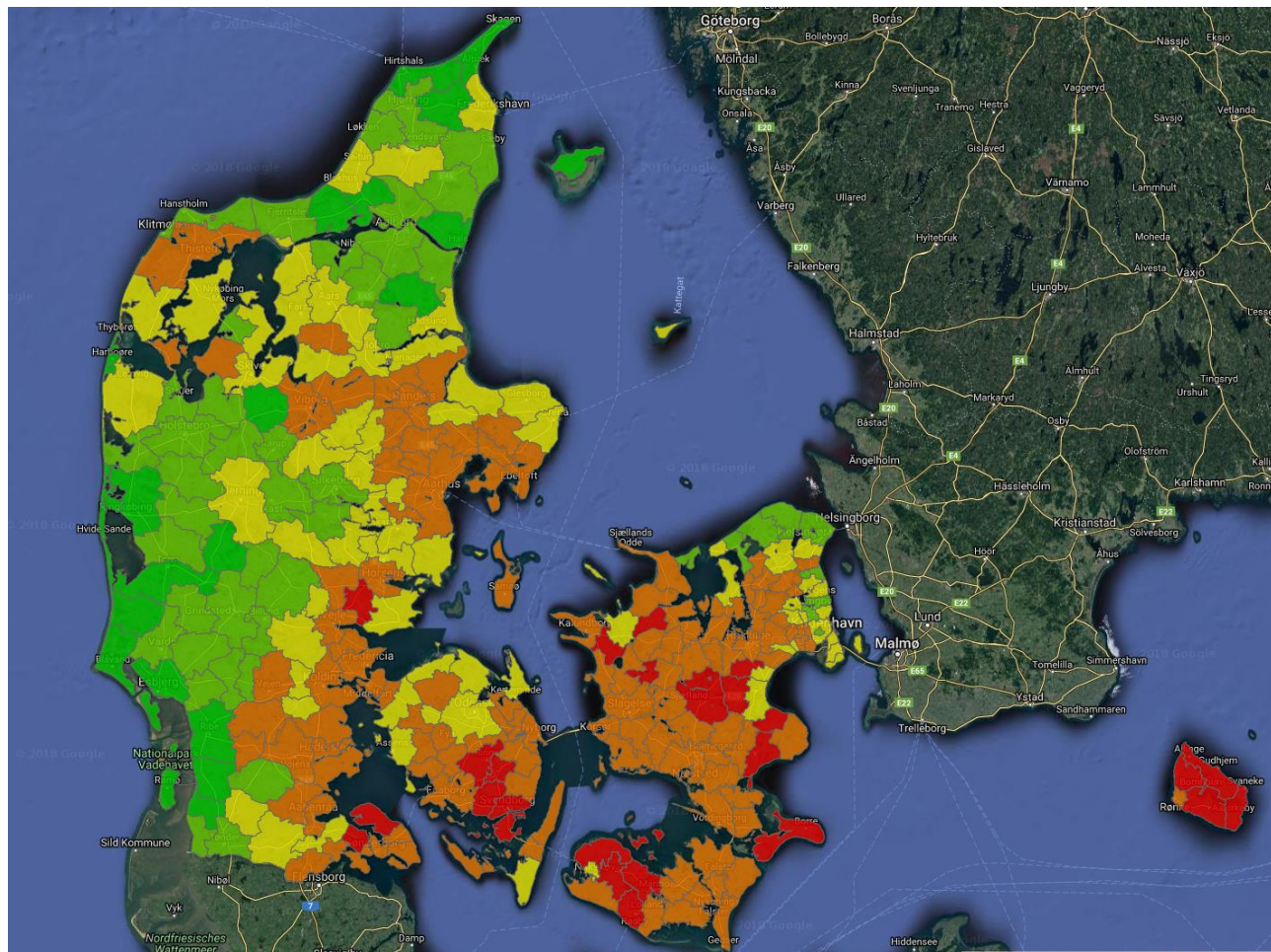


Radon Map - Denmark



Radon risk classes

- 0** Less than 0,3 % of the households in the area are estimated to have a radon level of 200 Bq/m³ or more.
- 1** 0,3-1 % of the households in the area are estimated to have a radon level of 200 Bq/m³ or more.
- 2** 1-3 % of the households in the area are estimated to have a radon level of 200 Bq/m³ or more.
- 3** 3-10 % of the households in the area are estimated to have a radon level of 200 Bq/m³ or more.
- 4** More than 10 %, and all the way up to 30% of the households in the area are estimated to have a radon level of 200 Bq/m³ or more.

Kilde: <https://www.dingeo.dk/kort/radon/>